



Prince
Resort
at The Cherry Grove Pier

Sales & Marketing by:



the hoffmann group
OCEANFRONT PROPERTY SPECIALISTS

Toll-Free 1-800-458-7890

Local 843-692-3333

www.oceaninvestments.com



Prince Resort

at The Cherry Grove Pier

Welcome

With its bold architecture and bright colors, North Myrtle Beach's new Prince Resort dominates the skyline of northern Cherry Grove and takes full advantage of all this long popular resort destination offers. In the oceanfront Phase I you get ocean views and direct access to over 450 feet of pristine beach as well as the famous Cherry Grove fishing pier.

In the second row Phase II, built over the resort's 8-story parking garage, Prince Resort purchasers have varied second home options. The north or south corner 1-bedroom units provide spectacular views of Hog Inlet's channels and marshlands. The 9th floor 1, 2, and 3-bedroom units overlook the garage rooftop water amenities that include pool, lazy river, spas and spacious sunbathing deck. The oceanview 1, 2 and 3-bedroom floor plans feature balconies that let you check out all the tourist activity!

Both phases offer spacious 1, 2 or 3 bedroom condominium floor plans. Each unit features designer furnishings, floor to ceiling windows, ceramic tile entry, plush carpeting, private balcony, full kitchen and high-speed internet.

The Resort's numerous amenities include oceanfront pool, kiddie pool, garage roof-top pool and lazy river, spas, spacious sunning decks, full-service restaurant including room service, fitness center, game room, meeting room, covered parking, business center and concierge services. The 1100-foot long Cherry Grove pier features a tiki bar and restaurant as well as a two-tier observation deck. It stays active year-round attracting both locals and vacationers and all skill levels of fishermen!

Visit The Hoffman Group today at our on-site sales office or call us to become an owner in the distinctive Prince Resort.



Sales & Marketing by:


the hoffman group
OCEANFRONT PROPERTY SPECIALISTS

Toll-Free 1-800-458-7890
Local 843-692-3333
www.oceaninvestments.com

All renderings, maps, landscaping, elevations, and plans are artist's conceptions. They are not to scale and are not guaranteed. The developer/builder reserves the right in its sole discretion to make changes or modifications to maps, plans, specifications, materials, features and colors without notice.



Prince
Resort
at The Cherry Grove Pier



Sales & Marketing by:

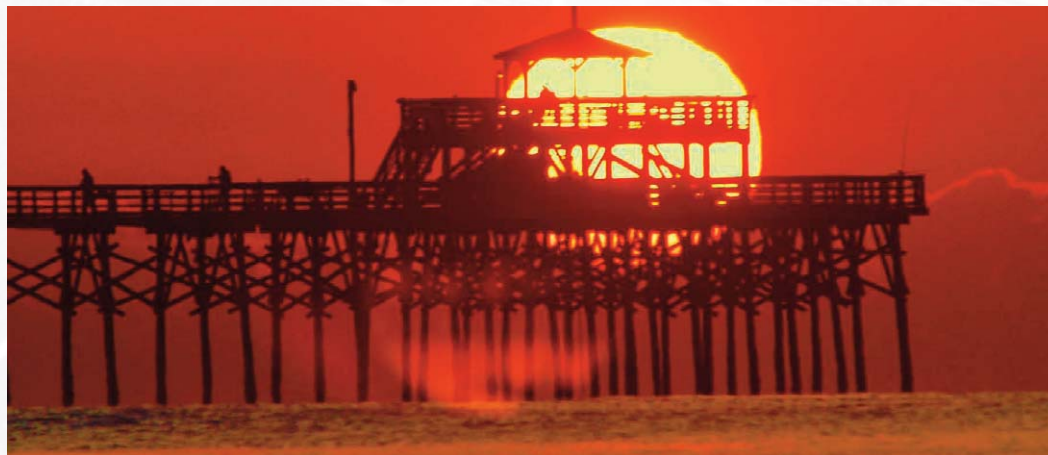

the hoffman group
OCEANFRONT PROPERTY SPECIALISTS

Toll-Free 1-800-458-7890
Local 843-692-3333
www.oceaninvestments.com

All renderings, maps, landscaping, elevations, and plans are artist's conceptions. They are not to scale and are not guaranteed. The developer/builder reserves the right in its sole discretion to make changes or modifications to maps, plans, specifications, materials, features and colors without notice.



Prince
Resort
at The Cherry Grove Pier



Sales & Marketing by:

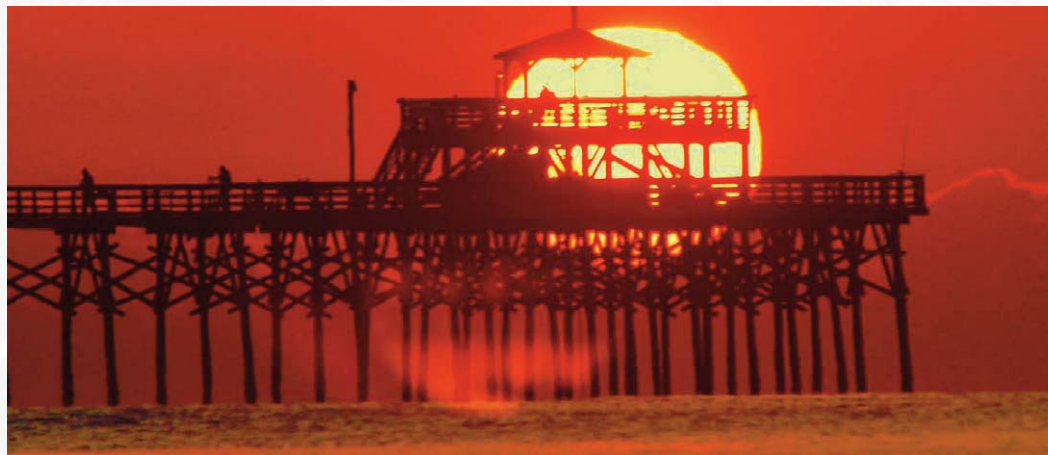
the hoffman group
OCEANFRONT PROPERTY SPECIALISTS

Toll-Free 1-800-458-7890
Local 843-692-3333
www.oceaninvestments.com

All renderings, maps, landscaping, elevations, and plans are artist's conceptions. They are not to scale and are not guaranteed. The developer/builder reserves the right in its sole discretion to make changes or modifications to maps, plans, specifications, materials, features and colors without notice.



Prince
Resort
at The Cherry Grove Pier



Sales & Marketing by:

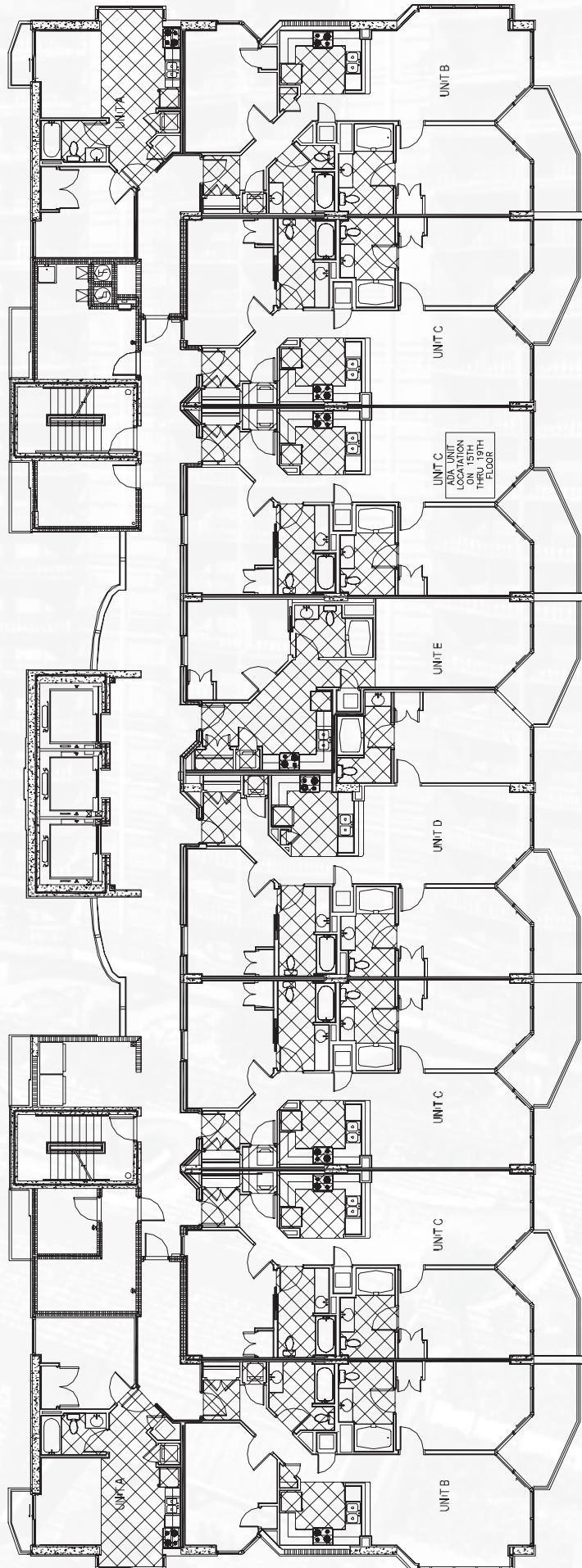
thehoffmangroup
OCEANFRONT PROPERTY SPECIALISTS

Toll-Free 1-800-458-7890
Local 843-692-3333
www.oceaninvestments.com

All renderings, maps, landscaping, elevations, and plans are artist's conceptions. They are not to scale and are not guaranteed. The developer/builder reserves the right in its sole discretion to make changes or modifications to maps, plans, specifications, materials, features and colors without notice.

Prince
Resort
at The Cherry Grove Pier

Unit Map



Sales & Marketing by:

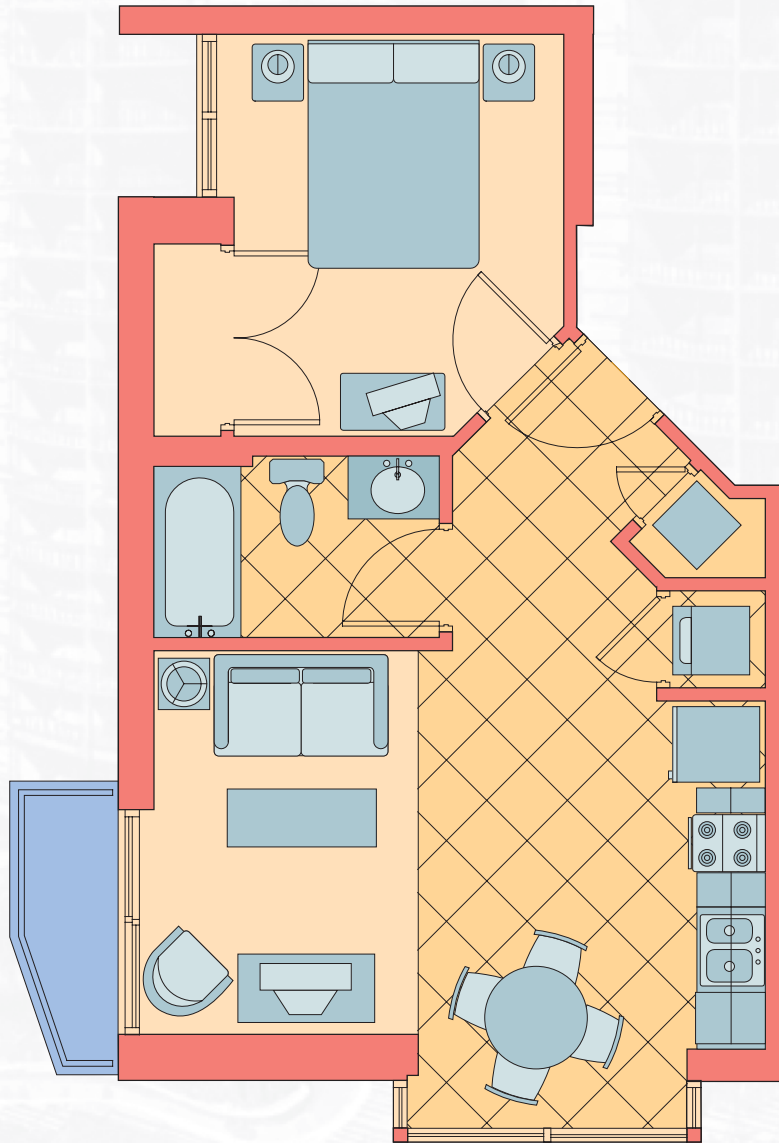
thehoffmangroup
OCEANFRONT PROPERTY SPECIALISTS

Toll-Free 1-800-458-7890
Local 843-692-3333
www.oceaninvestments.com

All renderings, maps, landscaping, elevations, and plans are artist's conceptions. They are not to scale and are not guaranteed. The developer/builder reserves the right in its sole discretion to make changes or modifications to maps, plans, specifications, materials, features and colors without notice.

Prince
Resort
at The Cherry Grove Pier

Unit A
1 Bed / 1 Bath
522 hsf.



Sales & Marketing by:

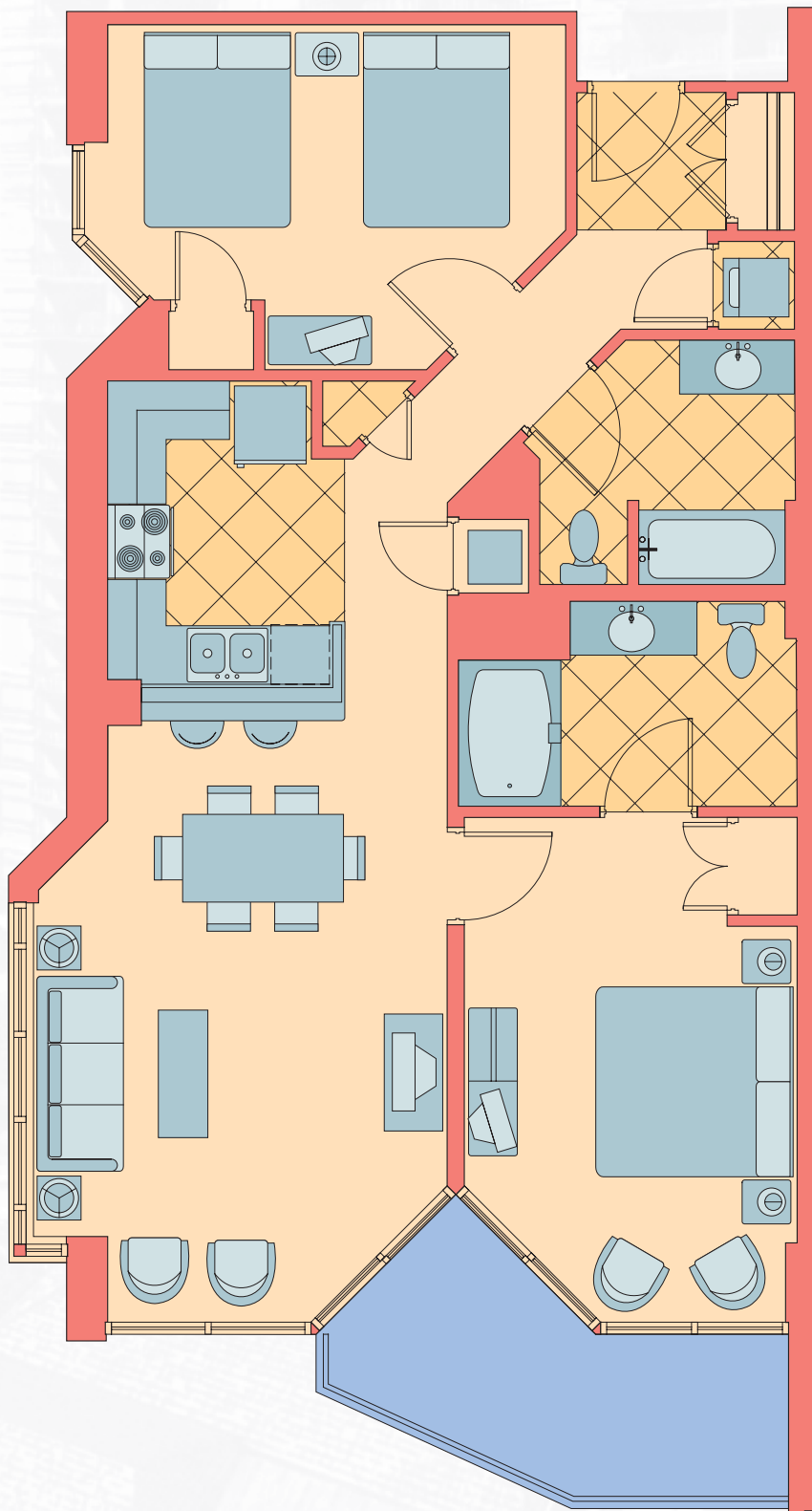
thehoffmangroup
OCEANFRONT PROPERTY SPECIALISTS

Toll-Free 1-800-458-7890
Local 843-692-3333
www.oceaninvestments.com

All renderings, maps, landscaping, elevations, and plans are artist's conceptions. They are not to scale and are not guaranteed. The developer/builder reserves the right in its sole discretion to make changes or modifications to maps, plans, specifications, materials, features and colors without notice.

Prince
Resort
at The Cherry Grove Pier

Unit B
2 Bed / 2 Bath
1116 hsf.



Sales & Marketing by:

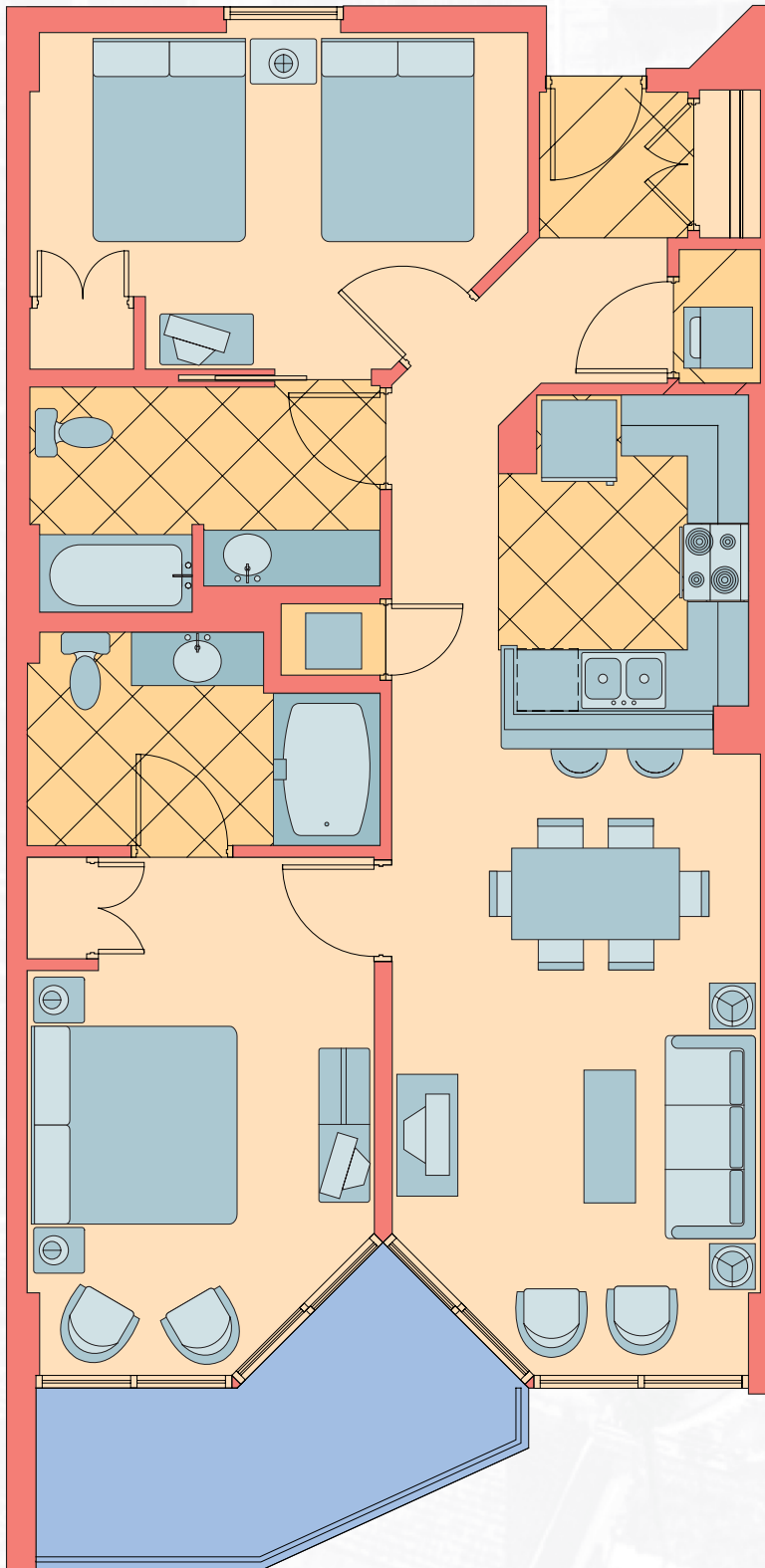
thehoffmangroup
OCEANFRONT PROPERTY SPECIALISTS

Toll-Free 1-800-458-7890
Local 843-692-3333
www.oceaninvestments.com

All renderings, maps, landscaping, elevations, and plans are artist's conceptions. They are not to scale and are not guaranteed. The developer/builder reserves the right in its sole discretion to make changes or modifications to maps, plans, specifications, materials, features and colors without notice.

Prince
Resort
at The Cherry Grove Pier

Unit C
2 Bed / 2 Bath
1075 hsf.



Sales & Marketing by:

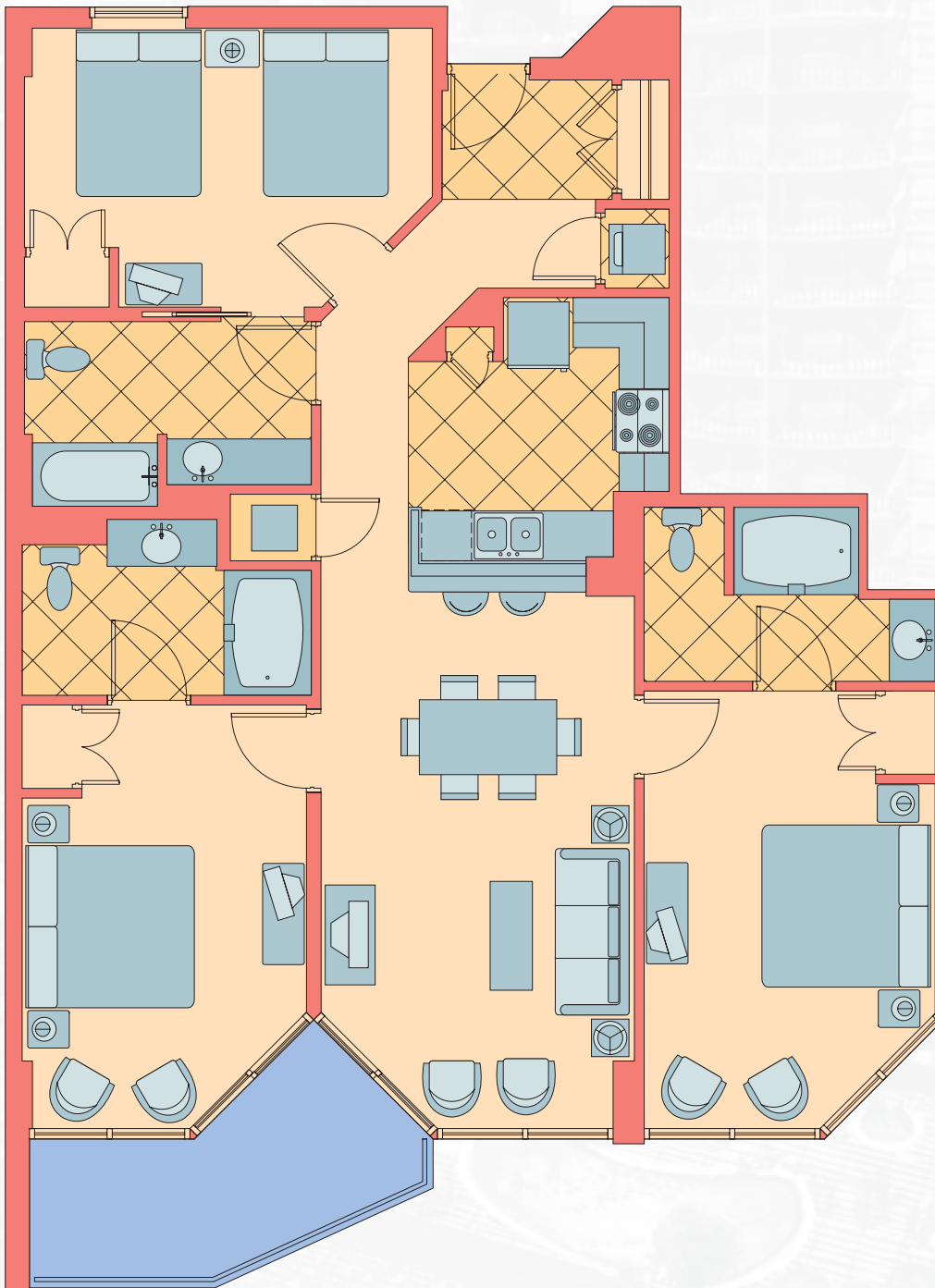
thehoffmangroup
OCEANFRONT PROPERTY SPECIALISTS

Toll-Free 1-800-458-7890
Local 843-692-3333
www.oceaninvestments.com

All renderings, maps, landscaping, elevations, and plans are artist's conceptions. They are not to scale and are not guaranteed. The developer/builder reserves the right in its sole discretion to make changes or modifications to maps, plans, specifications, materials, features and colors without notice.

Prince
Resort
at The Cherry Grove Pier

Unit D
3 Bed / 3 Bath
1412 hsf.



Sales & Marketing by:

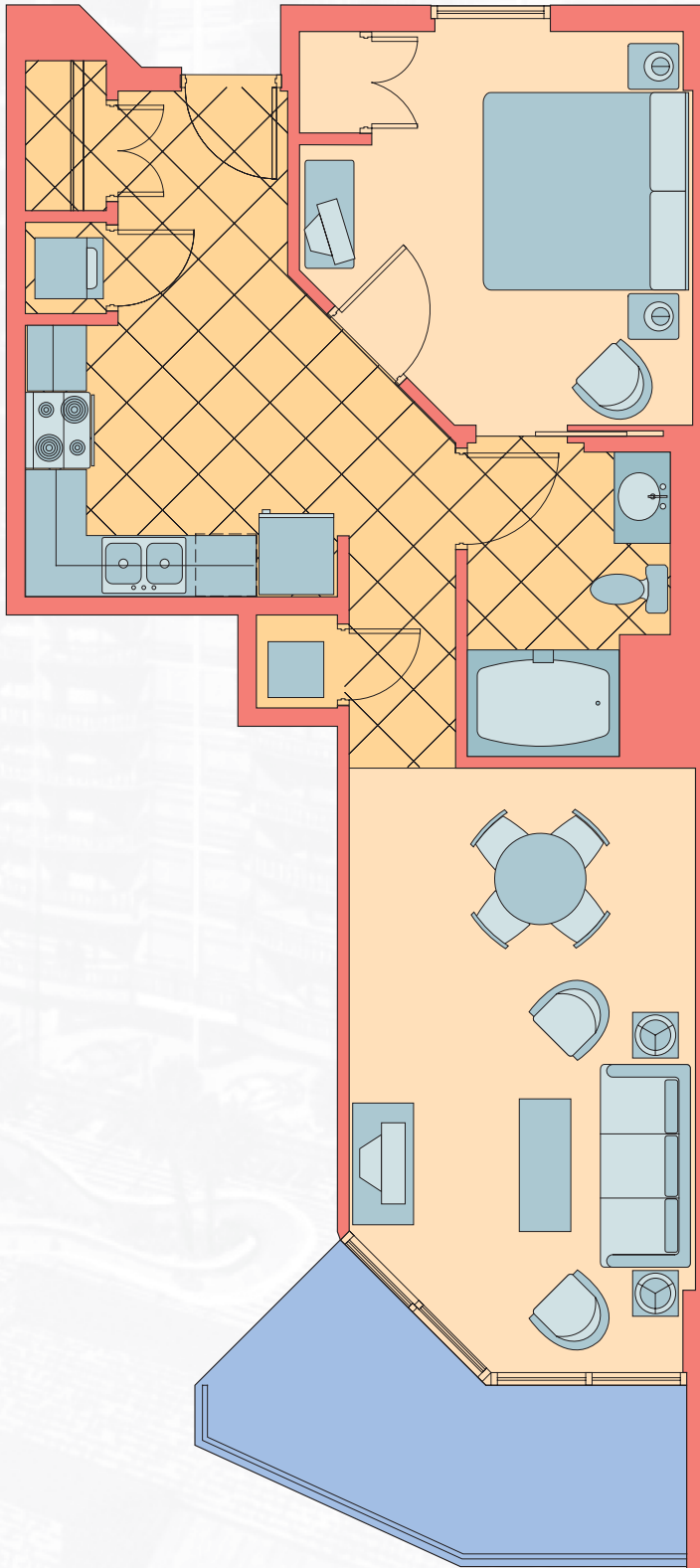
thehoffmangroup
OCEANFRONT PROPERTY SPECIALISTS

Toll-Free 1-800-458-7890
Local 843-692-3333
www.oceaninvestments.com

All renderings, maps, landscaping, elevations, and plans are artist's conceptions. They are not to scale and are not guaranteed. The developer/builder reserves the right in its sole discretion to make changes or modifications to maps, plans, specifications, materials, features and colors without notice.

Prince
Resort
at The Cherry Grove Pier

Unit E
1 Bed / 1 Bath
740 hsf.



Sales & Marketing by:

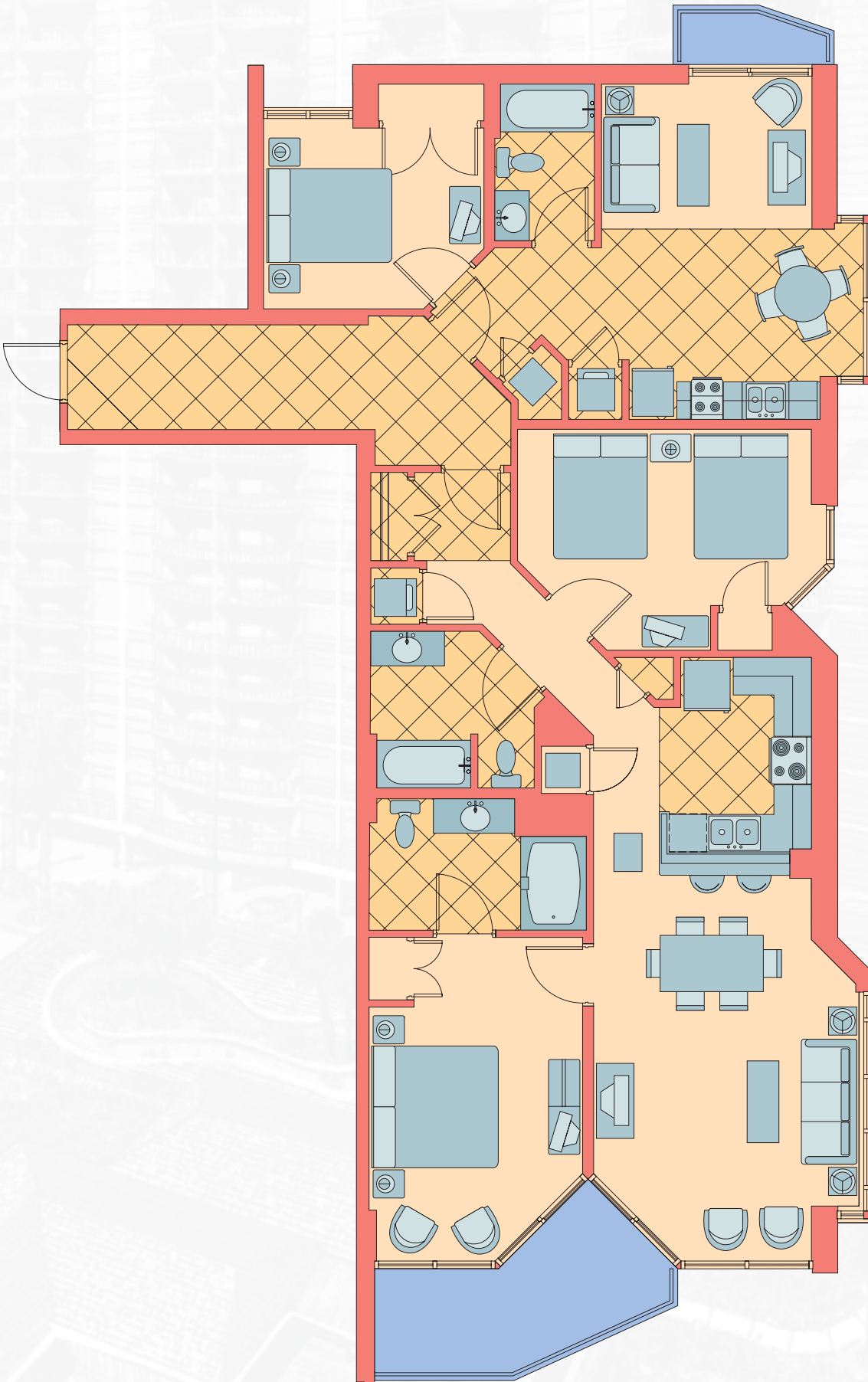
thehoffmangroup
OCEANFRONT PROPERTY SPECIALISTS

Toll-Free 1-800-458-7890
Local 843-692-3333
www.oceaninvestments.com

All renderings, maps, landscaping, elevations, and plans are artist's conceptions. They are not to scale and are not guaranteed. The developer/builder reserves the right in its sole discretion to make changes or modifications to maps, plans, specifications, materials, features and colors without notice.

Prince
Resort
at The Cherry Grove Pier

Unit AB Lockout
3 Bed / 3 Bath
1686 hsf.



Sales & Marketing by:

thehoffmangroup
OCEANFRONT PROPERTY SPECIALISTS

Toll-Free 1-800-458-7890
Local 843-692-3333
www.oceaninvestments.com

All renderings, maps, landscaping, elevations, and plans are artist's conceptions. They are not to scale and are not guaranteed. The developer/builder reserves the right in its sole discretion to make changes or modifications to maps, plans, specifications, materials, features and colors without notice.